



1st ASEAN-GERMAN EDUCATION & VOCATIONAL TRAINING FORUM

ATTY. ROWEL S. BARBA
Undersecretary & Chief-of-Staff

EMPLOYMENT RATE IN JANUARY 2017 IS ESTIMATED AT 93.4 PERCENT

Results from the January 2017 Labor Force Survey (LFS)

Philippines	January 2017 ^{a/}	January 2016
Population 15 years and over (in 000)	69,414	67,889
Labor Force Participation Rate (%)	60.7	63.6
Employment Rate (%)	93.4	94.3
Unemployment Rate (%)	6.6	5.7
Underemployment Rate (%)	16.3	19.6

^{a/} Estimates for January 2017 are preliminary and may change.

SOURCE: PSA

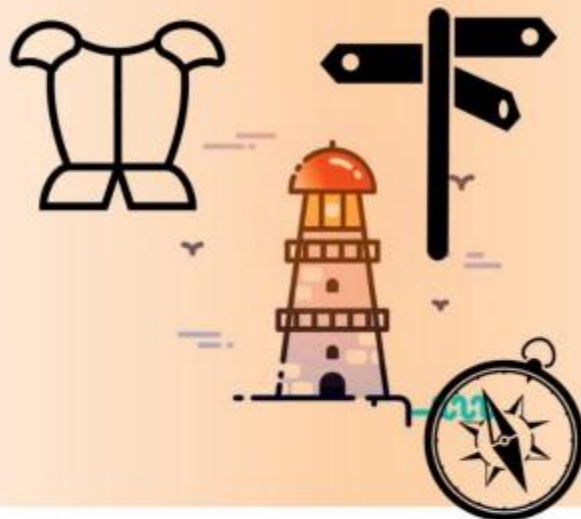
National Technical Education
and Skills Development Plan
2017-2022



Technical Education and Skills Development Authority

NTESDP

Guide of the TVET Sector in Preparation for the Industry 4.0



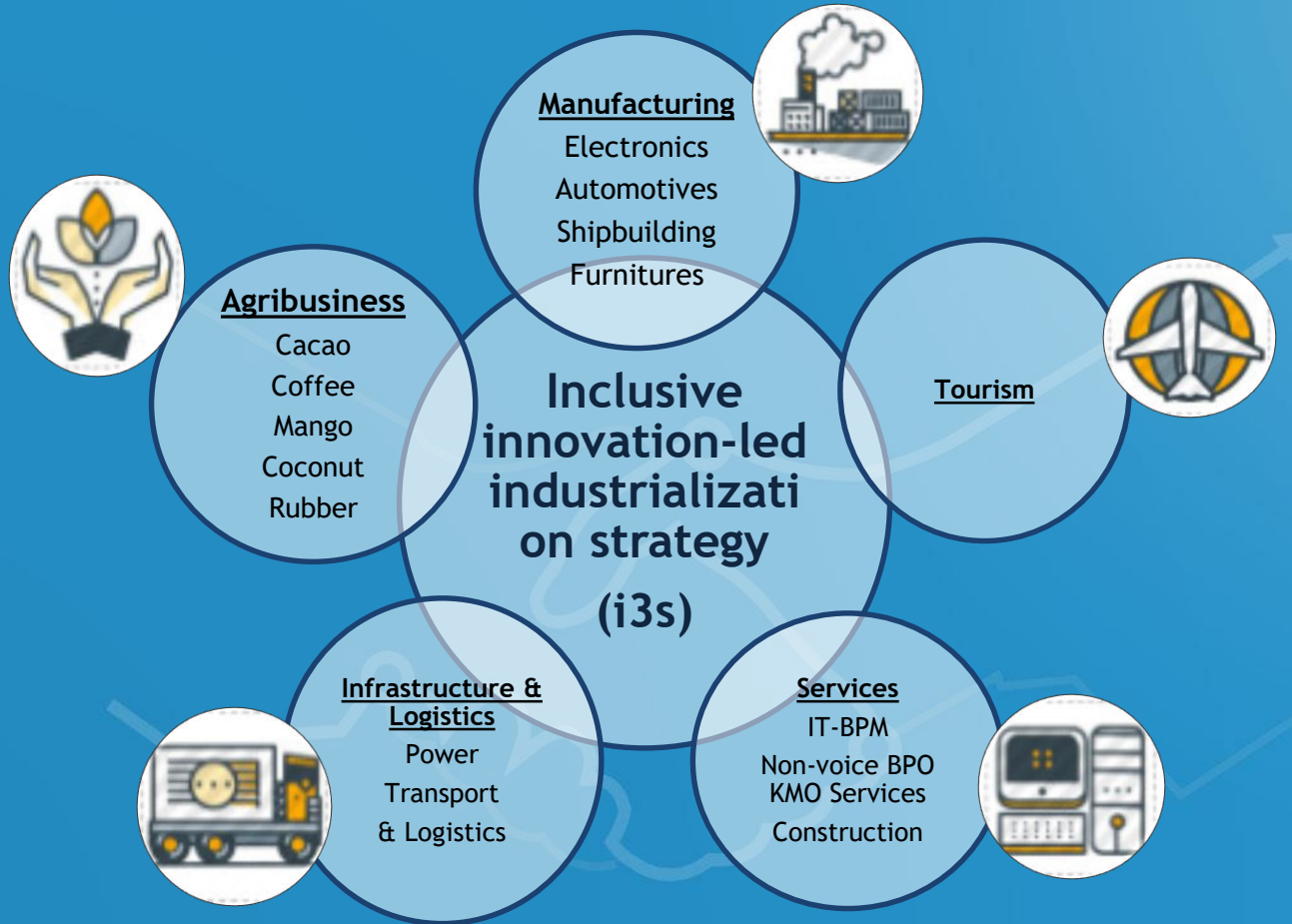
**MAJOR
DIRECTIONS**
**Strategies
Policies &
Programs
for TVET**

**Guide for all
TVET players:**

**(Industry, academe, government,
students, workers)**

ASEAN TVET Development Council





The background of the image is a blurred, out-of-focus version of the Philippine flag. It features the characteristic blue, white, and red horizontal stripes, with the yellow sun and three stars visible on the left side. A semi-transparent dark red rectangular band is positioned horizontally across the middle of the image, serving as a backdrop for the text.

Quality Education is Non-Negotiable

We have the duty to give the best for our people.

Thank you.

FOLLOW US

on your favorite social media accounts!



@DTI.Philippines



@DTIPhilippines



@DTI.Philippines