

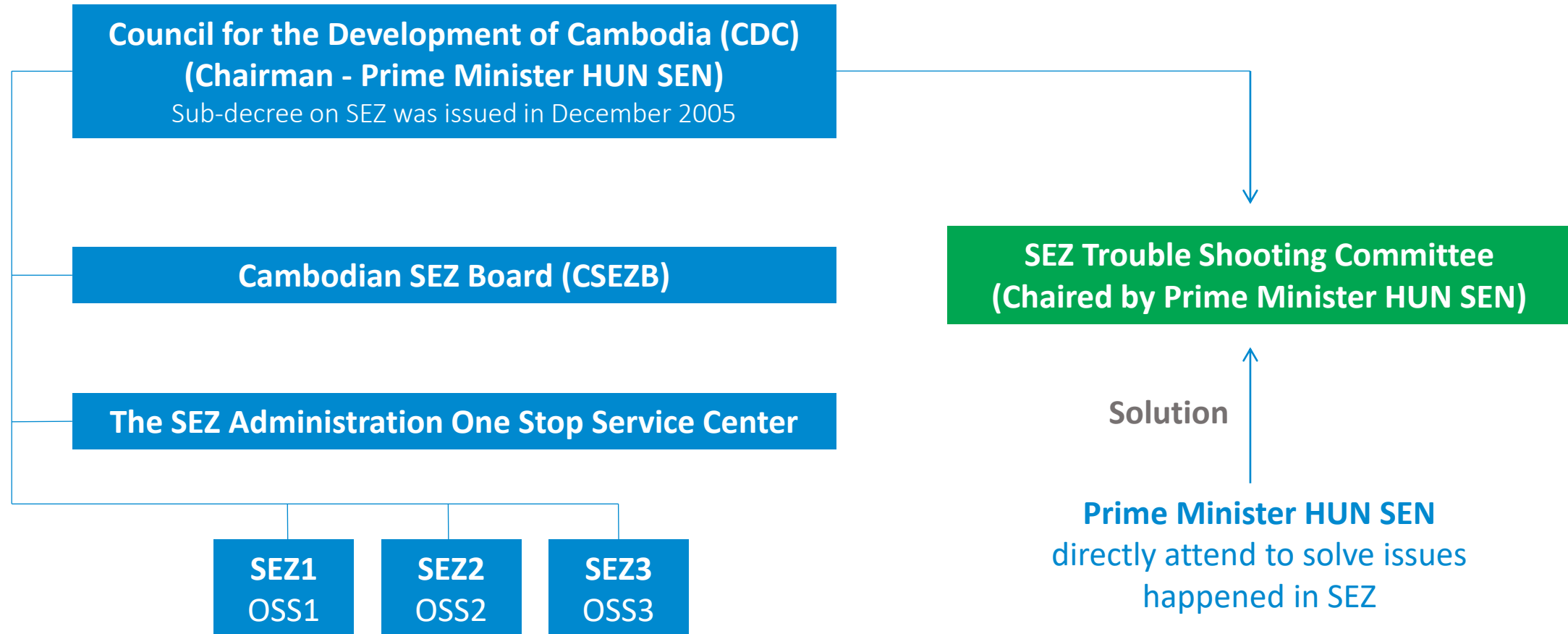


PHNOM PENH
SPECIAL ECONOMIC ZONE

COMMITTED TO THE FUTURE

WELCOME TO **PHNOM PENH SEZ!**

Commitment of Cambodian Government to SEZ (1)



Commitment of Cambodian Government to SEZ (2)



Phnom Penh SEZ Administration Office (One Stop Service Center) has started operation since 1 September 2008

H. E. Chea Vuthy, the Deputy Secretary General of CDC, is the Chairman of PPSEZ Administration Office

Government Authorities

- Council for the Development of Cambodia
- Customs & Excise Department
- Ministry of Commerce
- Ministry of Labor & Vocational Training

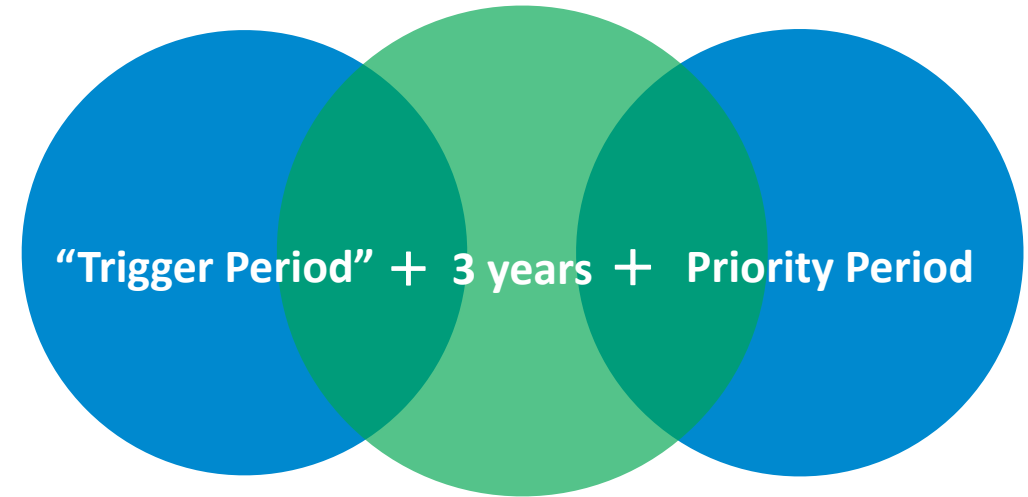
Services

- Investment Application
- Import / Export permit
- Custom Clearance
- Issuance of Certificate of Origin
- Work Permit
- Support for Labor Issues

Incentives for Investors (1)

Tax Incentives for Qualified Investment Project, QIP

1. Import duty exemption on construction materials and production equipment
2. Import duty exemption on production materials for export industry and export duty exemption
3. PROFIT TAX EXEMPTION



- Maximum Trigger Period: Either the first year of profit or 3 years after the QIP earns its first revenue, whichever sooner.
- Priority Period: To be determined according to the type of project and investment capital in the Financial Management Law, for light industry as below.
 - Investment Capital amount below US\$5million: 0 year
 - Investment Capital amount between US\$5million and US\$20million: 1 year
 - Investment Capital amount more than US\$20million: 2 years

Incentives for Investors (2)

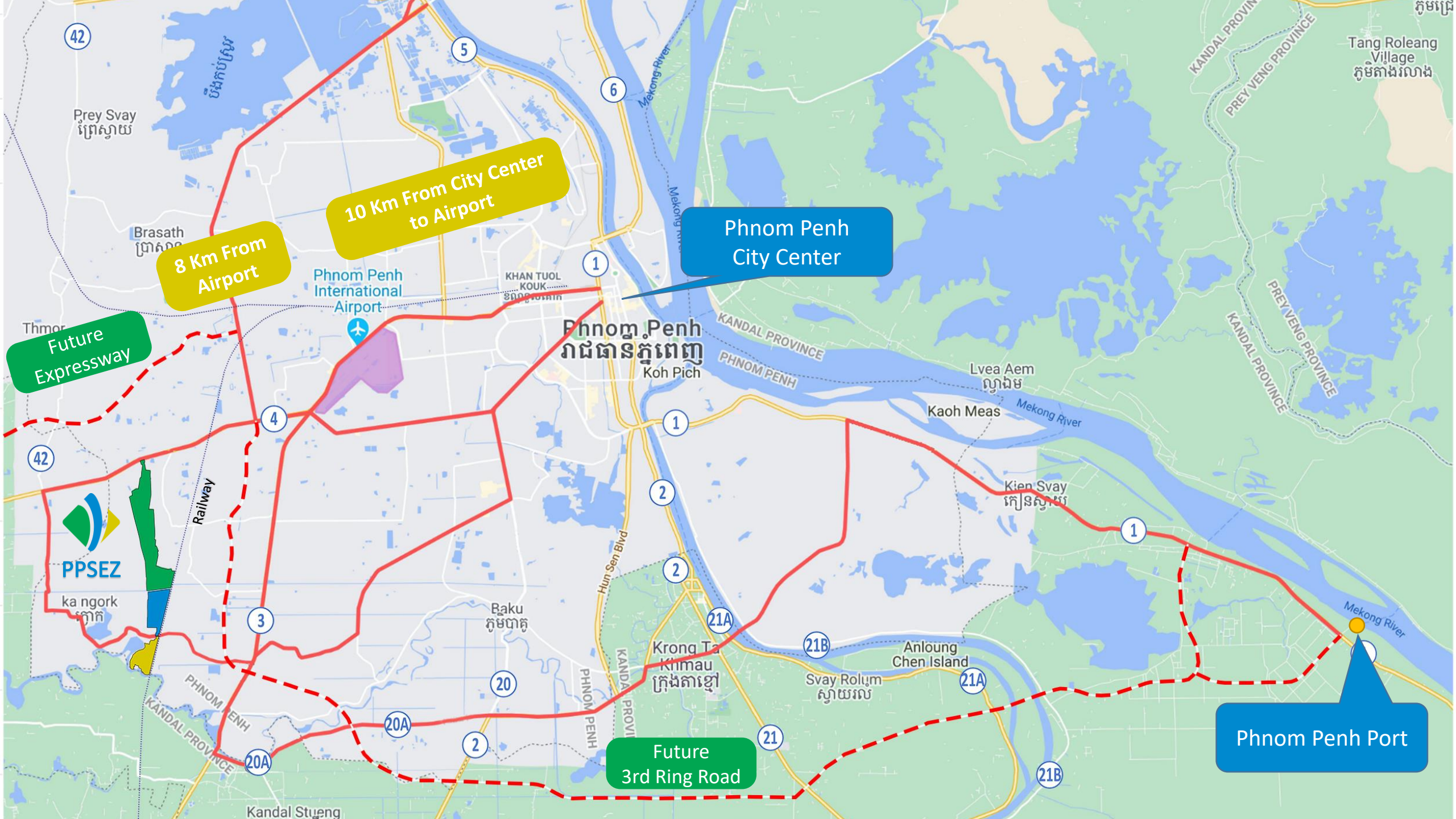
Tax Incentive for QIP-SEZ Investor

Exemption of 10% VAT in addition to import duty exemption

Type of QIP	Construction Material	Production Equipment	Production Material
Export Industry	Exempted	Exempted	Exempted
Domestic Industry	Exempted	Exempted	Not Exempted

Other benefits

- Equal market access for foreign investors
- 50 year lease of land available to foreign investors(transferable)
- Unrestricted currency exchange and fund transfer



Phnom Penh
City Center

8 Km From
Airport

10 Km From City Center
to Airport

Future
Expressway

Phnom Penh Port

Future
3rd Ring Road

Phnom Penh
រាជធានីភ្នំពេញ
Koh Pich

Phnom Penh
International
Airport

PPSEZ

ka ngork

Prey Svay
ព្រៃស្វាយ

Tang Roleang
Village
ភូមិតាំងរោង

Lvea Aem
ល្វើយ៉ាម

Kaoh Meas

Kien Svay
កៀនស្វាយ

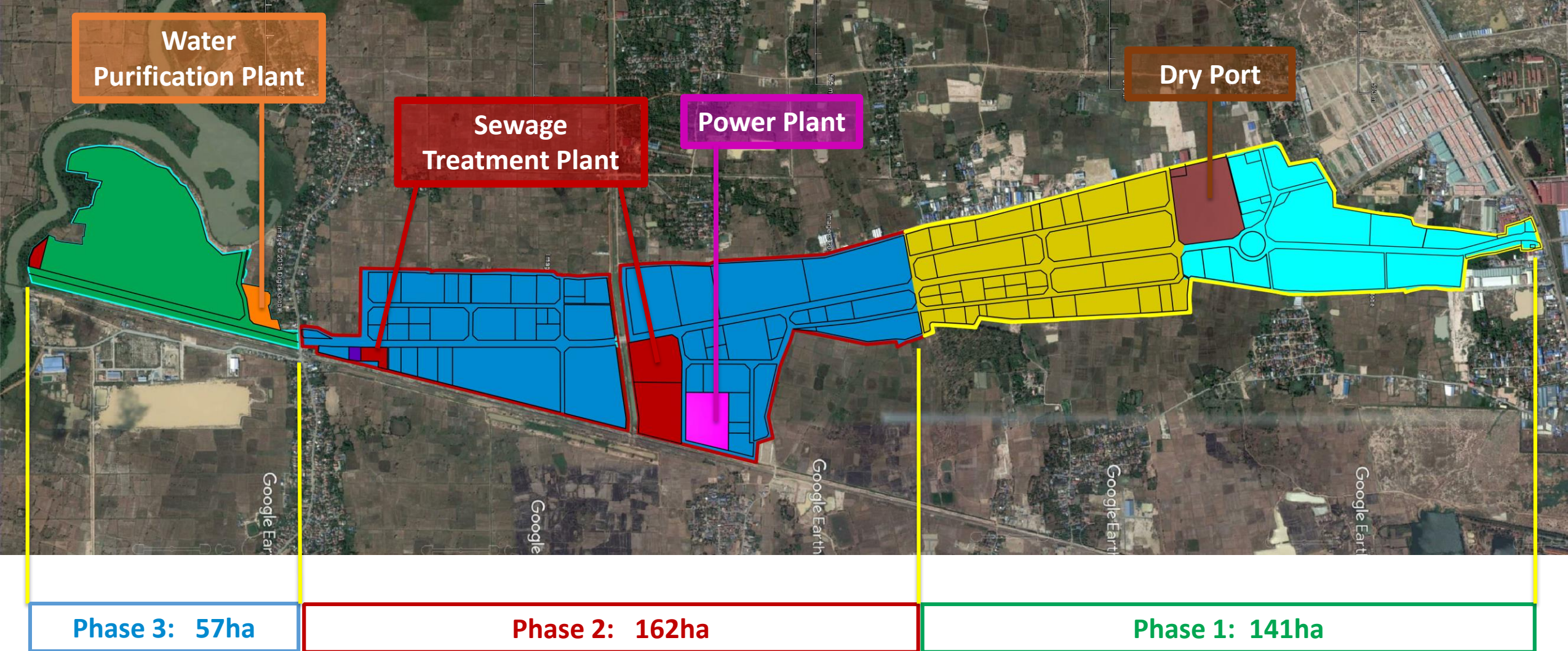
Baku
ភូមិបាកូ

Krong Ta
Khmau
ក្រុងតាខ្មៅ

Anlong
Chen Island

Svay Rolu
ស្វាយរល

Kandal Stueng



CURRENT CONDITION OF INFRASTRUCTURE

PHASE 1 (141ha):

Infrastructure work was completed in April 2008.

PHASE 2 (162ha):

Infrastructure work was completed in June 2019.

PHASE 3 (57 ha):

Started work from January 2019.

Total Area= Estimated 357 Ha
365days, 24 hours Operation.

Phnom Penh SEZ Facts and Figures

\$49M

CAPITAL

357Ha + 116Ha

TOTAL SITE AREA

104

STAFF

104

TENANT

12

INVESTOR NATIONS

43%

JAPANESE COMPANY

25,921

WORKERS PER DAY

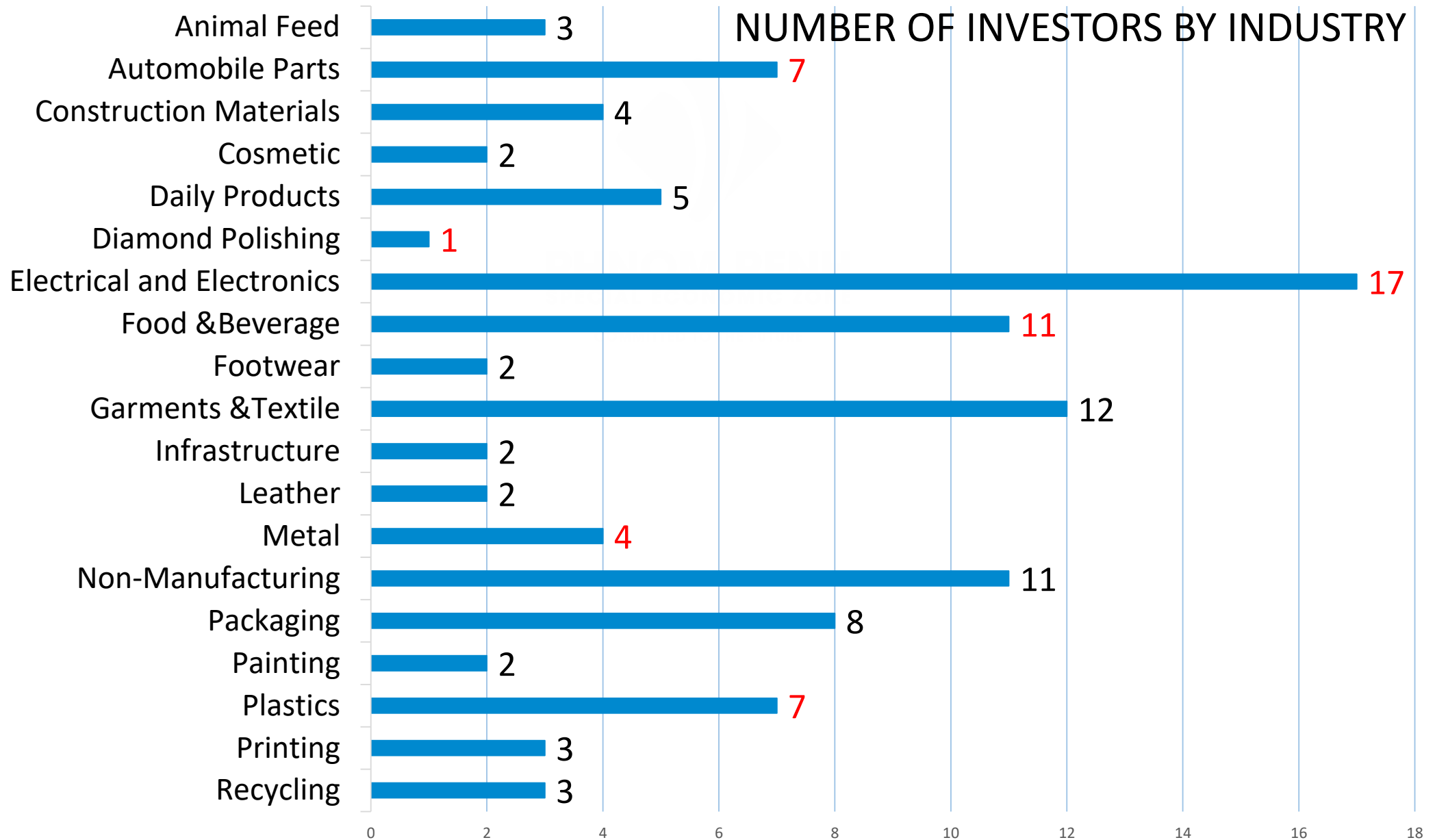
75%

FEMALE WORKER

\$667M

FDI INVESTMENT

Investors in Phnom Penh SEZ



International Corporations (Manufacturers)



MSG manufacturer from Japan



Dairy Products manufacturer from Vietnam



Animal Feed manufacturer from Taiwan



Candy manufacturer from USA



Animal Feed manufacturer from Thailand



Beverages manufacturer from USA



Car Components manufacturer from Japan



LAURELTON DIAMONDS

Subsidiary company of Tiffany & Co.



Automobile Interior manufacturer from Japan



Electronics manufacturer from Japan



Cosmeceuticals manufacturer from Japan



Wire Harness manufacturer from Japan



Electronics manufacturer from Thailand



Paint manufacturer from Thailand



Diapers manufacturer from Taiwan



Beverages manufacturer from Singapore



INDEPENDENT POWER PLANT (Backup power)

Phnom Penh SEZ runs independent power plant by establishing **Colben Energy (Cambodia) PPSEZ Ltd.** with a Singaporean company. (<http://www.colbenenergy.com>)

National Grid Capacity: **20 MW/h**

Power Plant Capacity: **11MW/h**

Fuel: **Heavy Oil**





Water Purification

- 1) Adjoining River
- 2) Raw Water Reservoir
- 3) Chemical Treatment
- 4) Filtering
- 5) Water Towers

CAPACITY: 14,900m³/day (Expandable)

Sewage Treatment Plant

- 1) Waste Water (Primary Treatment by Factories)
- 2) Primary Pond
- 3) Lagoon
- 4) Settling Pond
- 5) Final Pond
- 6) Discharge to Public River

CAPACITY: 4,500m³/day (Expandable)





DRY PORT

Phnom Penh SEZ establishes **Bok Seng PPSEZ Dry Port Ltd.** with a Singaporean company for Logistics Center in order to facilitate import / export transactions of our customers.

<http://www.bokseng-ipl.com>





PHNOM PENH
SPECIAL ECONOMIC ZONE

COMMITTED TO THE FUTURE

**Thank you very much
for your attention**

National Road 4, Khan Posenchey,
Phnom Penh, Cambodia

+855 (0) 23 729 798

sales@ppsez.com

(English/Chinese/Japanese/Khmer)

www.ppsez.com