



We implement reliable, accessible and sustainable electrical distribution solutions.
ផ្តល់នូវដំណោះស្រាយផ្នែកអគ្គិសនី ប្រកបដោយទំនុកចិត្ត ភាពងាយស្រួលនិង និរន្តរភាព

WHO WE ARE

About us

Since 2003, we are a Technology **leader** in Cambodia specialized in **Power Distribution** and **Automation Systems**



Key Figures

160 employees

40 engineers

4,000 sqm of Office,
Warehouse and Factory



Company History

2003 Establishment of ATS

2005 Panel Builder **Factory**

2019 **IEC 61439** for our LV Switchboards

IEC/TR 61641 for Internal Arc Fault test by ASTA

2019 **ISO 9001:2015** by Rheinland TÜV

2021 Schneider **PrismaSeT** Certified System Panel Builder



WHO WE ARE

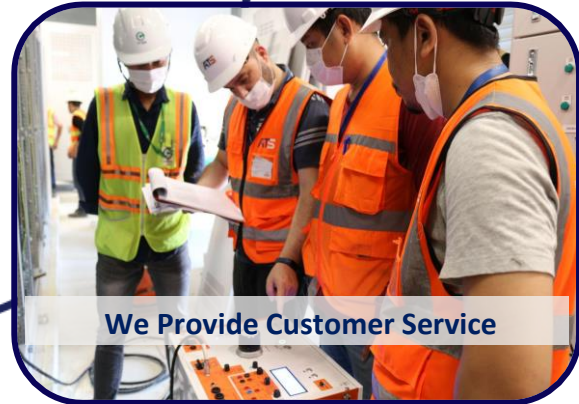


We Manufacture

ATS



We Supply



We Provide Customer Service

ROUTES TO MARKET

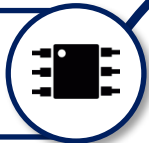
DISTRIBUTION



PROJECTS



- Products
- Components



- > 400 retail shops
- 25 Provinces & Cities



Buildings
Infrastructure
Energy
Manufacturing



- Products
- Solutions
- Services



- EPC
- M&E Contractors
- Construction

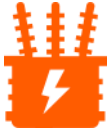
OUR MARKETS



OUR SOLUTIONS



LV DISTRIBUTION



MV DISTRIBUTION



AUTOMATION & CONTROL



LIGHTNING & STORM PROTECTION



PUMPING SYSTEM

OUR SOLUTIONS



OUR SOLUTIONS – ASTA TYPE TESTED PANEL



- ATS Own Panel Design
- MSB 4000A Form 4B
- ASTA full type test IEC 61439-1

Intertek

Certificate No. 21719B

ASTA Certificate of Verification Tests

Laboratory Ref. No: R417-2043
APPARATUS: 4000 A, 415 V / 690 V / 8 kV (U_{pn} , U_{L1} / U_1 / U_{sup}), 50/60 Hz, IP 43, Form 4b, Power Switchgear and Controlgear Assembly (PSC-Assembly) incorporating three phase & neutral horizontal and vertical busbar system, a protective conductor, one 4000 A incoming ACB and six outgoing functional units comprising: ACB 2500 A, MCCBs 1250A, 700A, 350A, 250 A and 100 A. The PSC-Assembly is suitable for indoor use and has a metallic enclosure.
DESIGNATION: ATS LV Switchgear - MSB
MANUFACTURER: ADVANCED TECHNICAL SUPPLIES Co., Ltd. #19, Street 209 Phnom Penh Kingdom of Cambodia
TESTED BY: Power Testing & Technology Institute (PT & T), LS Industrial Systems Co., Ltd., 68 Wolmyeong-ro #201, Heungdeok-gu, Cheongju-si, Chungcheongbuk-do, 361-720, Korea
DATE(S) OF TESTS: 20th February to 08th March 2018

The apparatus, constructed in accordance with the description, drawings and photographs incorporated in this certificate has been subjected to the series of proving tests in accordance with:

IEC 61439-2: Edition 2.0 2011-08

Verifications with reference to the tests listed in Annex D of IEC 61439-1 Edition 2.0 2011-08:
1: Strength of material and parts
2: Degree of protection of enclosures
3: Clearances
4: Creepage distances
5: Protection against electric shock and integrity of protective circuits
6/7/8: No verification by testing required
9: Dielectric properties
10: Temperature-rise limits
11: Short-circuit withstand strength
12: Electromagnetic compatibility (EMC)
13: Mechanical operation

For ratings assigned by the manufacturer and proved by the tests see pages 1 to 5

The results are shown in the record of Proving Tests attached hereto. The values obtained and the general performance is considered to comply with the above standard(s) and to justify the ratings assigned by the manufacturer as stated on the ratings page(s). This Certificate applies only to the apparatus tested. Responsibility for conformity of any apparatus having the same or other designations rests with the Manufacturer. This Certificate comprises this front sheet, 5 ratings pages, plus 177 other pages and 37 drawings as detailed on pages 6 to 12

Only integral reproductions of this whole certificate or reproductions of this page accompanied by any ratings pages are permitted. Issued by Intertek, Centre Court, Meridian Business Park, Leicester, LE19 1WD England. Contact: asta@intertek.com Tel: +44 (0)116 296 2000.



010

P Gibbons
ASTA Observer
Certification Manager
Date: 28th August 2018

Test Report No. 2728B

Intertek

ASTA TEST REPORT

Laboratory Ref. No: R418-0678

APPARATUS: 4000 A, 415 V / 690 V / 8 kV (U_{pn} / U_1 / U_{imp}), 50/60 Hz, IP 43, Form 4b, Power Switchgear and Controlgear Assembly (PSC-Assembly) incorporating three phase & neutral horizontal and vertical busbar systems, a protective conductor, one 4000 A incoming ACB and six outgoing functional units comprising: ACB 2500 A, MCCBs 1250A, 700A, 350A, 250 A and 100 A. The PSC-Assembly is suitable for indoor use and has a metallic enclosure.
DESIGNATION: ATS LV Switchgear - MSB
MANUFACTURER: ADVANCED TECHNICAL SUPPLIES Co., Ltd. #19, Street 209 Phnom Penh, Kingdom of Cambodia
TESTED BY: Power Testing & Technology Institute (PT&T), LS Industrial Systems Co., Ltd., 68 Wolmyeong-ro #201, Heungdeok-gu, Cheongju-si, Chungcheongbuk-do, 361-720, Korea
DATES OF TESTS: 04th March 2018

The apparatus, constructed in accordance with the description, drawings and photographs attached hereto has been examined in accordance with Client's instructions test procedures and requirement generally in accordance with:

IEC/TR 61641 Edition 3.0 2014-09, Clauses 8 applying Criteria 1 to 5

Tests under the conditions of arcing due to an internal fault with a short-circuit current of 85kA (I_{sc} and I_{sc}) initiated along the distribution vertical busbars and the incoming connections (line and load side) respectively, at a rated operational voltage of 440V and arc duration of 0.5s (t_{arc}), applying criteria for an assembly providing personnel protection under arcing conditions.

This is not a certificate of rating. A certificate of rating could not be issued as the arc fault tests to IEC/TR 61641 Edition 3.0 do not establish a rating and only selected tests were performed.

The documents forming this Test Report are:

Record of proving tests: Pages 1 to 28
Diagram no.: GLY3A
Oscillogram nos.: 18201245, 18201248, 18201249, 18201250, 18201251, 18201252, 18201253
Photograph nos.: P001 to P011
Drawing nos.: From 17N75-ATS-A01-01 to 17N75-ATS-A01-35, 17N75-ATS-A02-01 & 17N75-ATS-B01-01

The Record of Proving Tests applies only to the apparatus tested. The responsibility for conformity of any apparatus having the same designation with that tested rests with the Manufacturer.



010

P Gibbons
ASTA Observer
Certification Manager
Date: 28th August 2018

Reproduction of the complete Test Report only is permitted. Issued by Intertek, Testing and Certification Ltd, Centre Court, Meridian Business Park, Leicester, LE19 1WD, United Kingdom. Contact: asta@intertek.com Tel: +44 (0)116 296 2900, www.intertek.com

OUR SOLUTIONS – PrismaSeT



Life Is On | Schneider Electric

Certification

This is to certify that

Advanced Technical Supplies Co., Ltd

is a Prisma Partner of Schneider Electric Overseas Asia Pte Ltd

in Cambodia and has a technical collaboration agreement for the design, assembly and quality control of the tested low voltage power distribution switchboards using the following functional systems:

Prisma iPM system

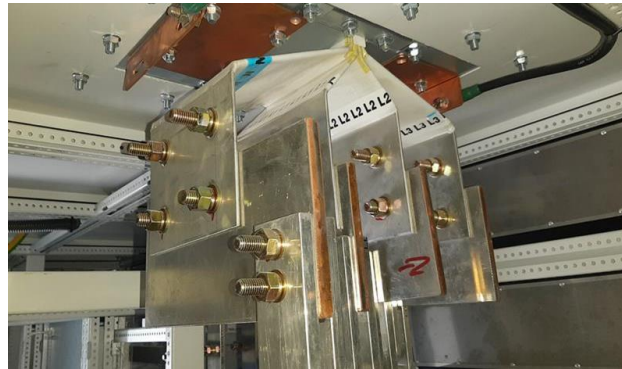
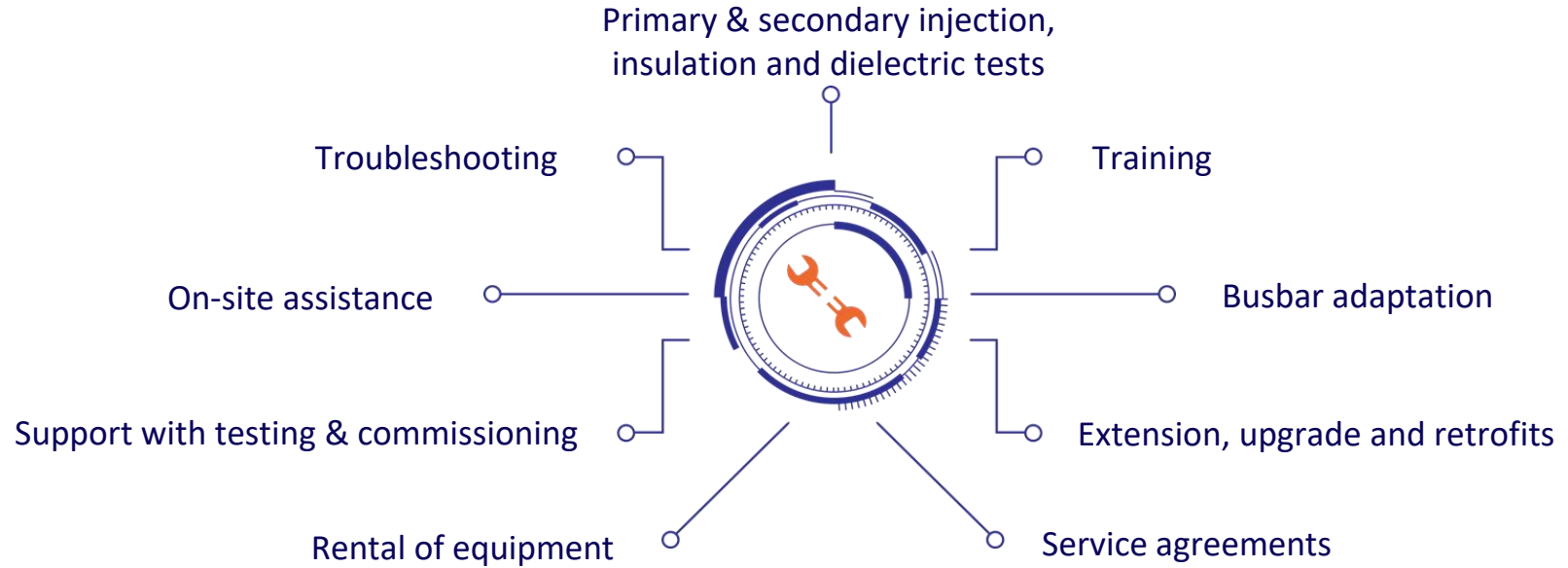
Certified System Panel Builder

Life Is On | Schneider Electric

James Kyo Mun CHAE

James Kyo Mun CHAE
Country General Manager,

OUR SERVICES



PANEL MANUFACTURING

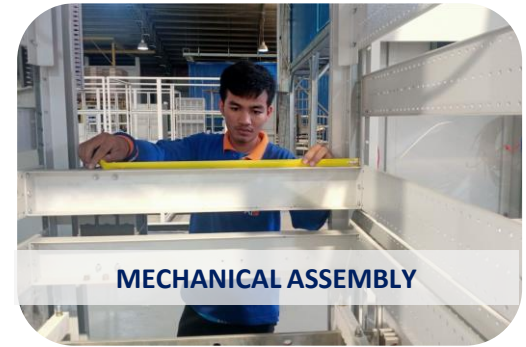


✓ Since 2005

✓ 100 employees

✓ Based in Phnom Penh

MANUFACTURING - MECHANICAL WORKSHOP



MANUFACTURING - ELECTRICAL WORKSHOP



MANUFACTURING – QUALITY COMMITMENTS



We **Improve**
the quality



We **Control** and
Monitor our products

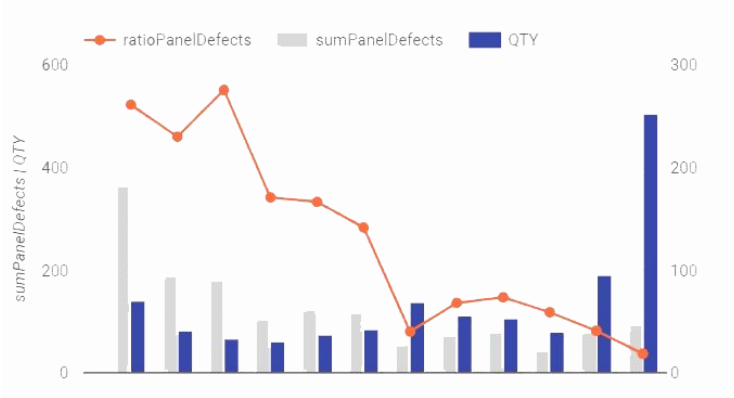


We meet
International Standards



We increase
Customer Satisfaction

CERTIFICATIONS – ISO 9001:2015



92%

*Of our customers are satisfied by our offer
Based on a survey on 38 customers in 2018*

100% TÜV Rheinland ISO 9001:2015 certification. Conditions and application require price approval.

Certificate

Standard **ISO 9001:2015**

Certificate Registr. No. **01 100 1835709**

Certificate Holder:

ATS

Advanced Technical Supplies Co., Ltd.
395 Phlaurum, Stoeung Meanchey Phnom Penh,
Cambodia, 120605

Scope:

Design, Development, Manufacture, Supply and Services of Low Voltage Electrical and Automation Solutions

Proof has been furnished by means of an audit that the requirements of ISO 9001:2015 are met.

Validity:

The certificate is valid from 2019-03-18 until 2022-03-17.
First certification 2019

2019-03-18

Thipath
TÜV Rheinland Cert GmbH
Am Grauen Stein · 51105 Köln

www.tuv.com



OUR PARTNERS



An aerial night view of a city skyline, featuring a prominent curved skyscraper with a distinctive top. The city lights are visible, and the overall scene is in grayscale with a dark overlay. The text "PROJECT REFERENCES" is centered over the image.

PROJECT REFERENCES

CHIP MONG TOWER



CHIP MONG LANDMARK 271



THE PENTHOUSE RESIDENCE



ACLEDA BANK



UCB BANK HEAD OFFICE



PHNOM PENH AIRPORT



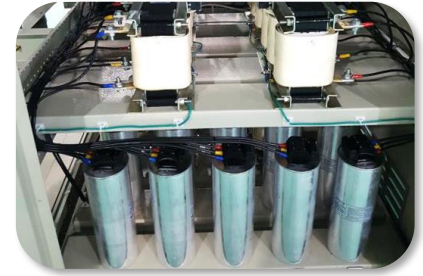
WATER TREATMENT PLANT – PHNOM PENH & SIEM REAP AIRPORT



CROWN BEVERAGE CANS



CBL - HEINEKEN



CHIP MONG INSEE CEMENT FACTORY



CONTACT US



ats.com.kh



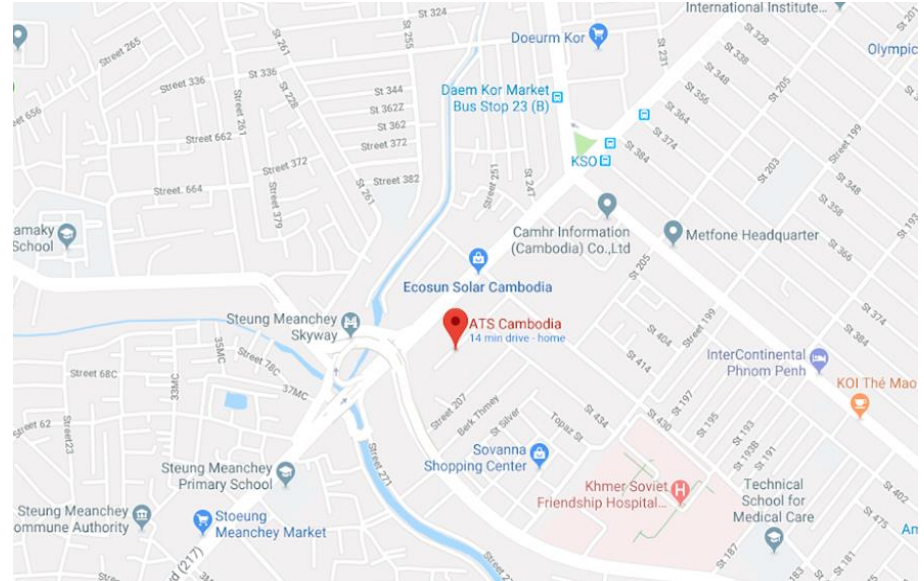
email@ats.com.kh



+855(0)23 222 411



ATS Cambodia
#19, Street 209
Phnom Penh, Cambodia



Follow us



ATS